

A white silhouette of the London skyline against a dark blue background, featuring landmarks such as the London Eye, Big Ben, and the Shard.

# Crossrail – to Delivery

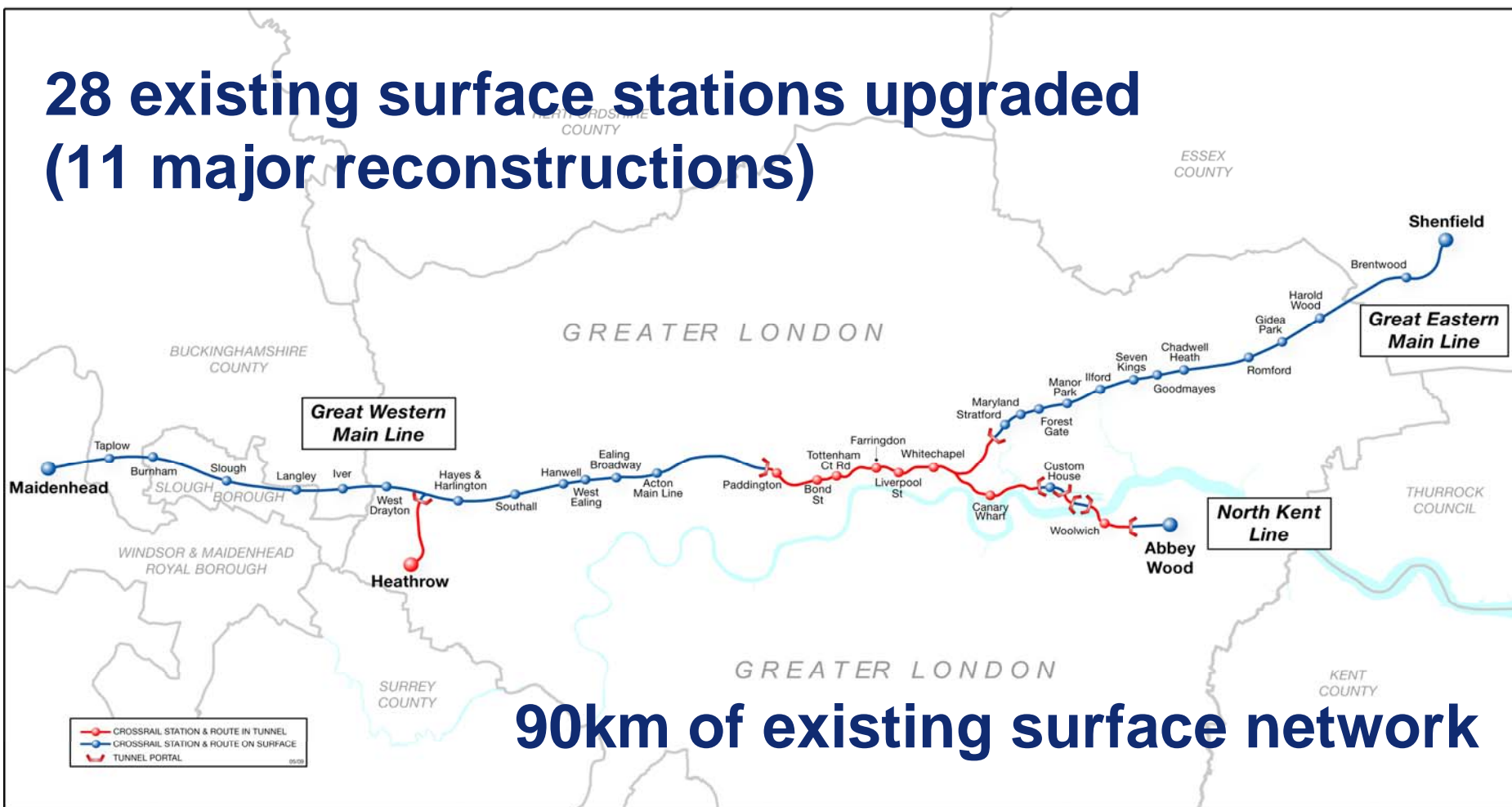
Rob Holden  
Chief Executive

“Investment into important projects like Crossrail, the largest construction project in Europe, is vital to create and protect jobs as well as supporting businesses, so that we can grow our way out of recession and ensure a strong future for London and the country as a whole.”

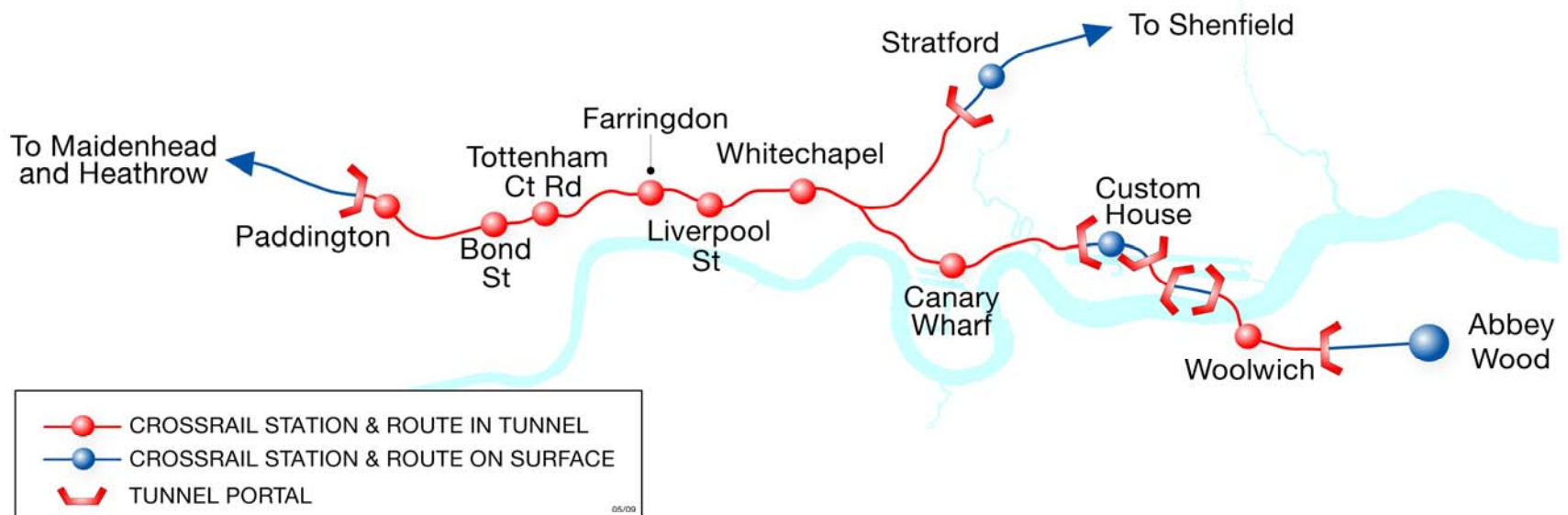
**Gordon Brown**



# 28 existing surface stations upgraded (11 major reconstructions)



## 21 km of new sub-surface twin-bore railway through London



**9 sub-surface stations**

# Crossrail Benefits

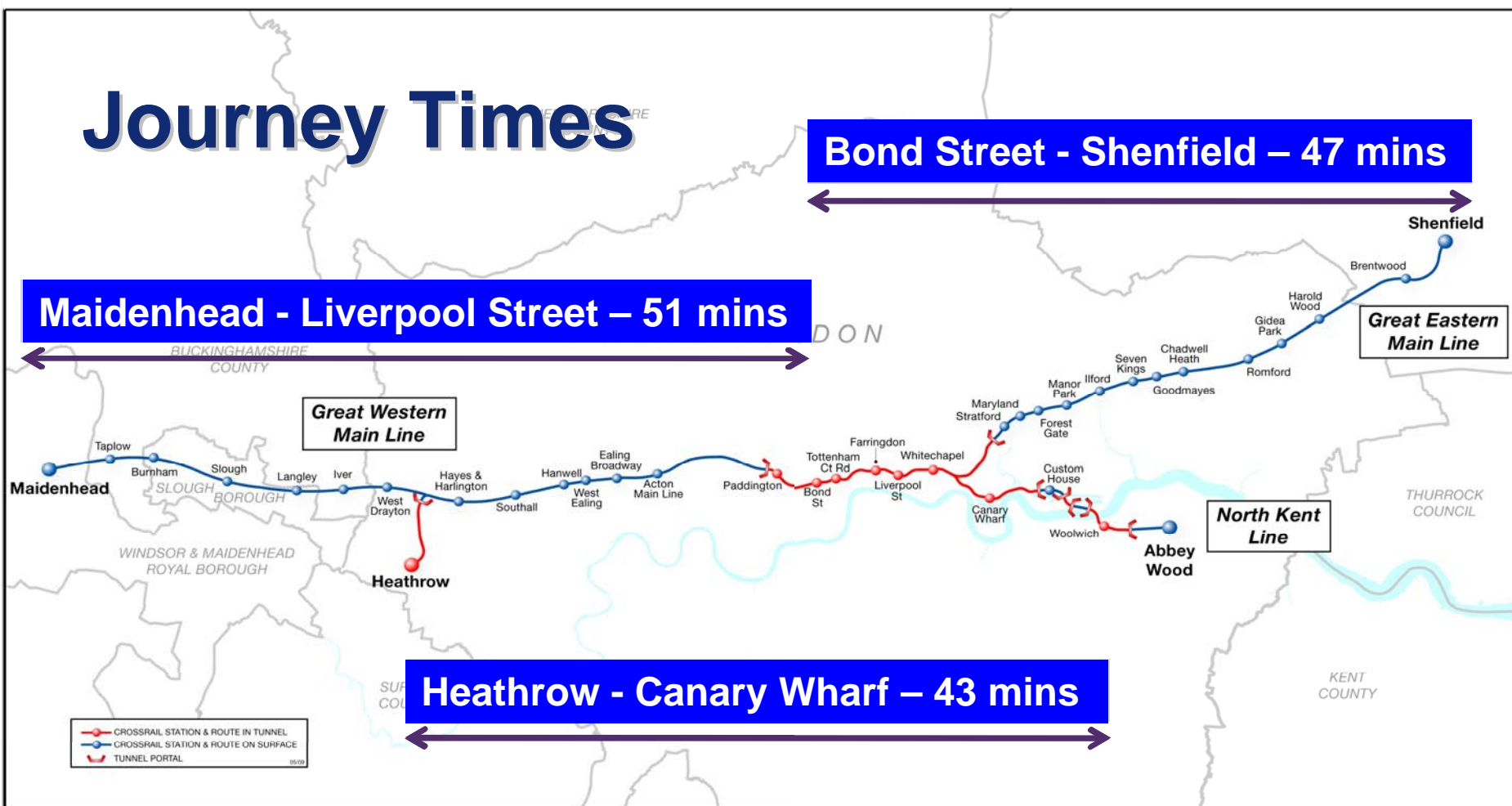


# Journey Times

**Bond Street - Shenfield – 47 mins**

**Maidenhead - Liverpool Street – 51 mins**

**Heathrow - Canary Wharf – 43 mins**





## **Rolling Stock**

- A mainline train fleet allowing 24 tph at peak period services
- 200m long trains – 10 carriages each with three sets of doors
- 1,500 seated and standing passengers per train at peak times





# Parliamentary Powers

2009

2010

2011

2012

2013

2014

2015

2016

2017

2018



15<sup>th</sup> May 2009  
Construction begins  
at Canary Wharf



Mid 2011 - 2017

Launch first TBM

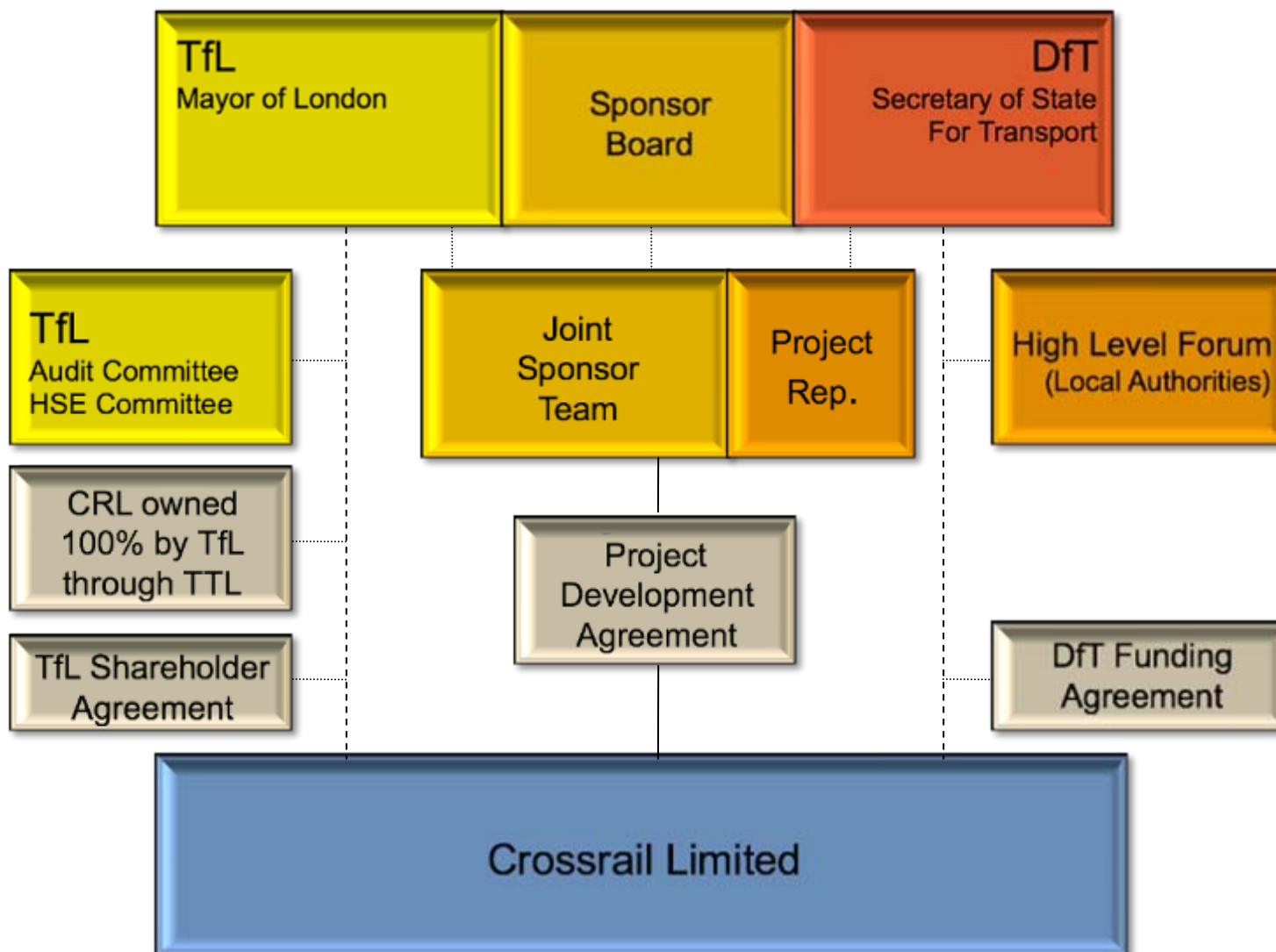


Feb 2013 - 2017

Systems Install

2017- Phased  
opening

# Programme



# Funding

<b>TfL</b> Mayor of London  <b>£7.7bn</b>	<b>DfT</b> Secretary of State For Transport  <b>£5.6bn</b>
--	--

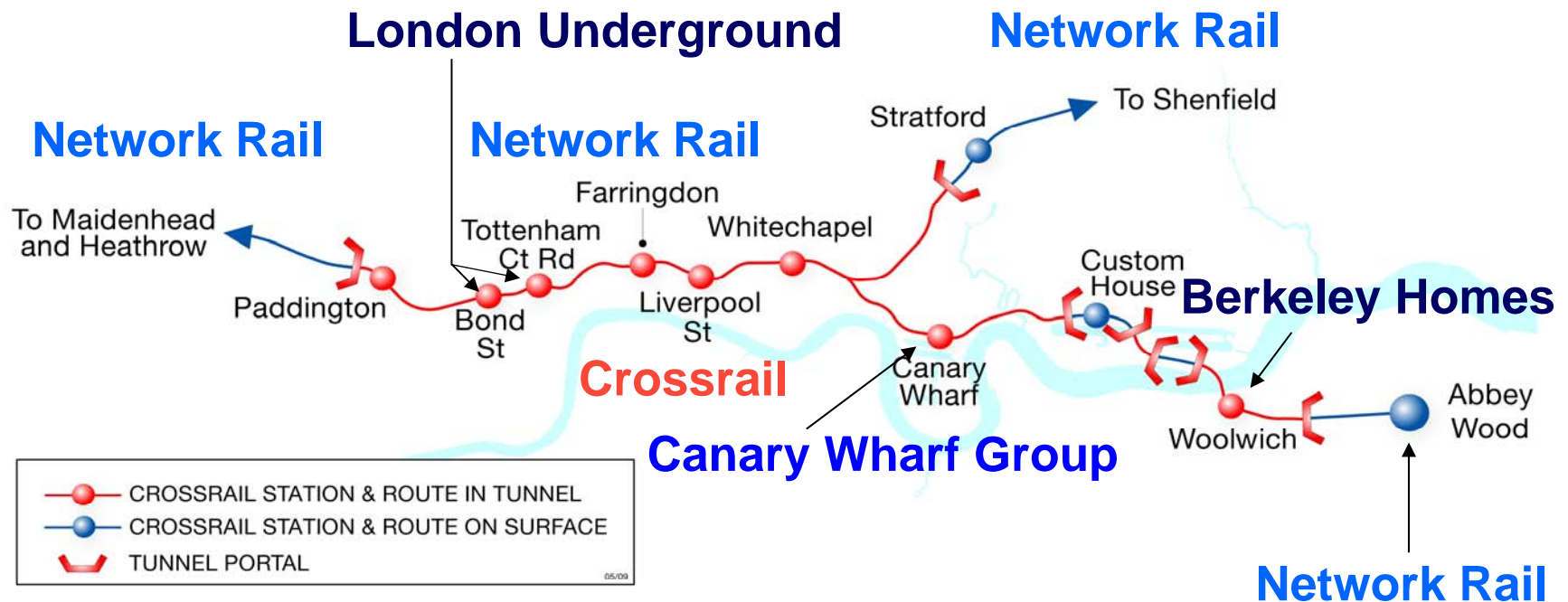
Other Funding = £2.6bn

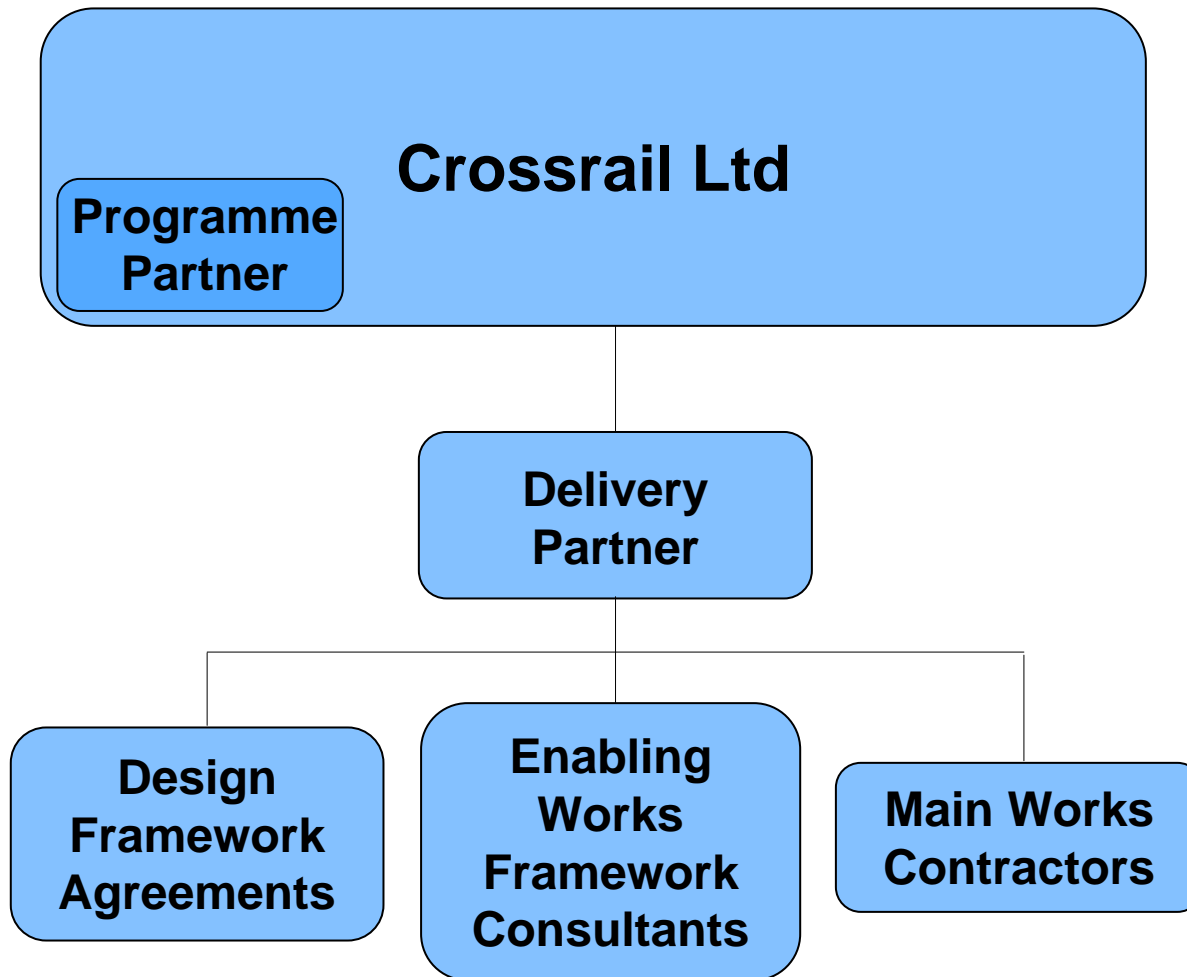
**Total = £15.9bn**

# Funding

- **TfL Underwritten**
- GLA (NNDR debt) - 3.5
- TfL – core contribution - 2.7
- LU Interface savings - 0.4
- Sales of surplus land and property - 0.5
- Developer contributions - 0.3
- London Planning Charge - 0.3
- **Total - 7.7**
- **DfT Underwritten**
- DfT grant contribution - 5.1
- BAA / City Corporation (guaranteed) - 0.5
- **Total - 5.6**
- **Other (incl unguaranteed)**
- Network Rail (ONW) - 2.3
- Depot (Operating Lease) - 0.5
- City Corporation (additional) - 0.1
- Less other residual costs - (0.4)
- **Total - 2.5**
- **TOTAL SOURCES - 15.9**

# Industry Partners





# Supply Chain

# Design Framework Agreements



CAPITA SYMONDS

**JACOBS**



**ATKINS**

*Halcrow*

**mm** Mott  
MacDonald



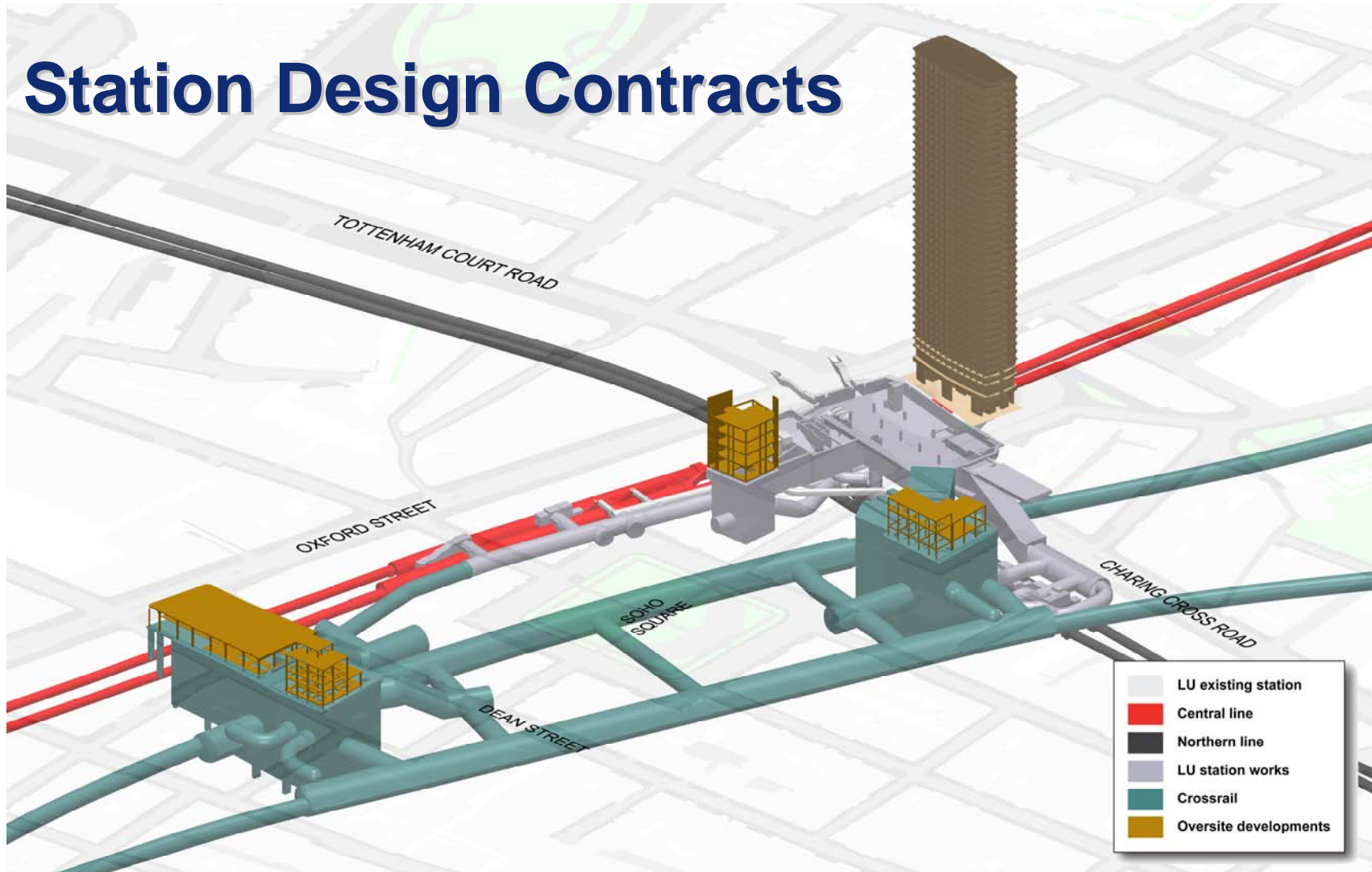
**BDP.**



ARUP



# Station Design Contracts





Jan

Feb

Mar

Apr

May

Jun

Jul

Aug

Sept

Oct

Nov

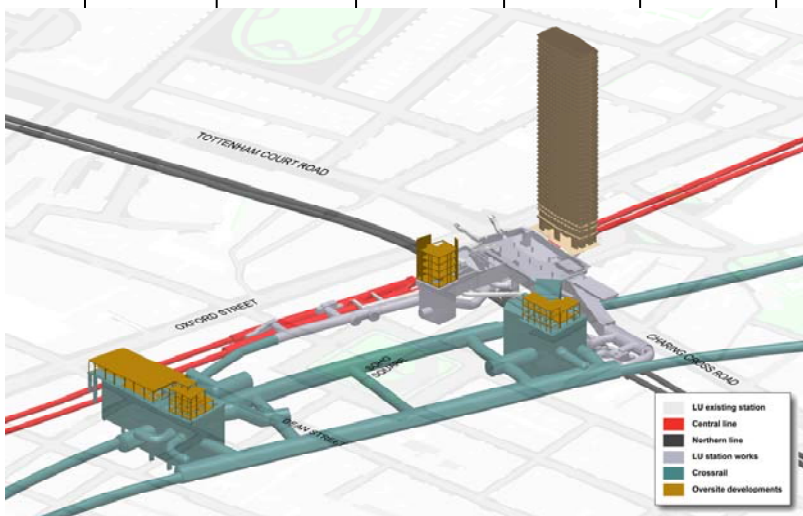
Dec

Jan 2010  
OJEU Notices  
Published

# Station Contracts

Summer 2010  
Invitations to  
Tender

End 2010  
Contracts Awarded



Aug

Sept

Oct

Nov

Dec

Jan

Feb

Mar

Apr

May

Aug 2009  
OJEU Notices  
Published

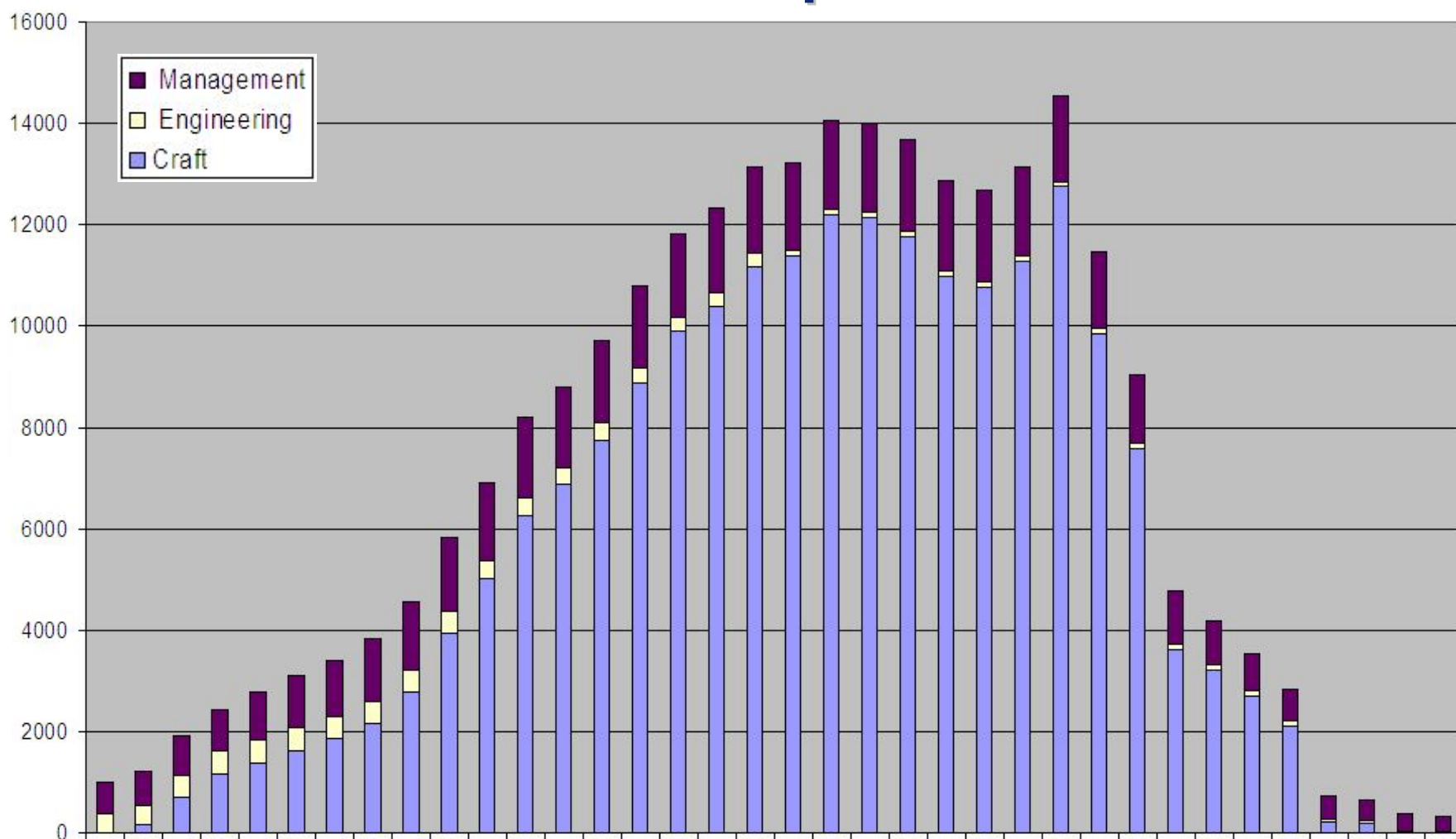
# Tunnelling Contracts

Q1 2010  
Invitations to  
Tender

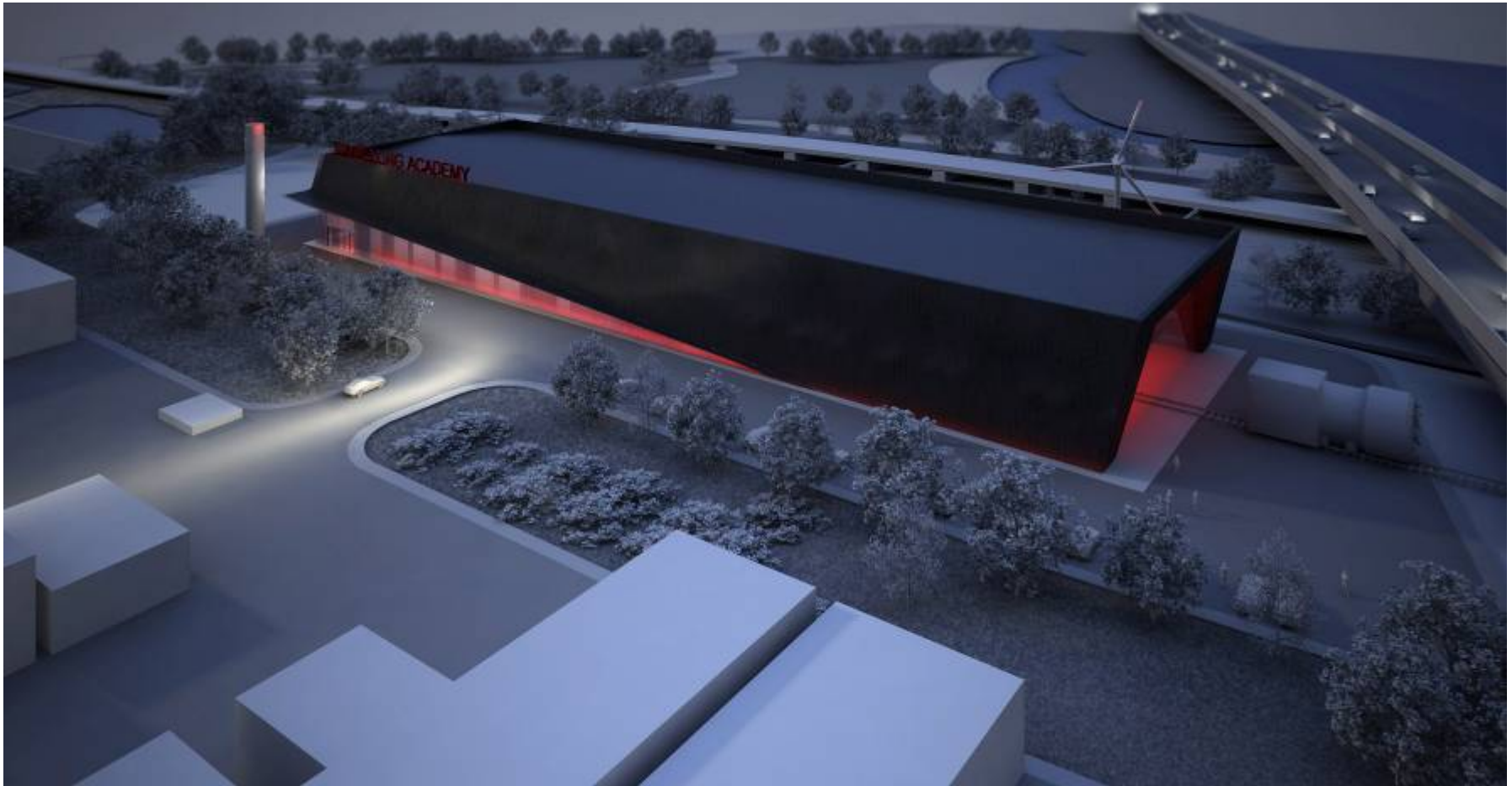
Mid-2010  
Contracts Awarded



# Estimate of Personnel Requirements



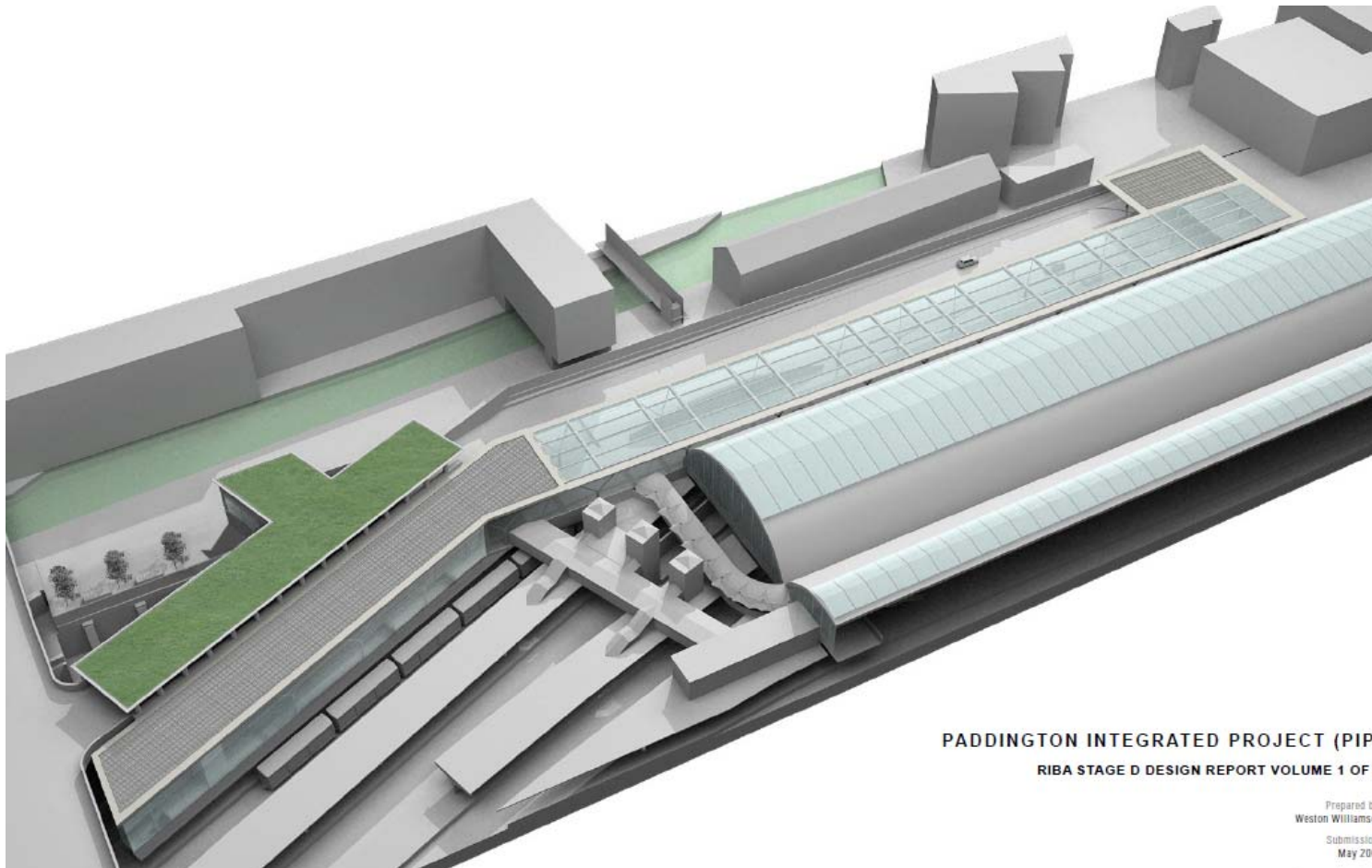
# Tunnelling Academy



# Royal Oak Portal



# Paddington Integrated Project



PADDINGTON INTEGRATED PROJECT (PIP)

RIBA STAGE D DESIGN REPORT VOLUME 1 OF 1

Prepared by  
Weston Williams  
Submission  
May 2016

# Paddington Station



# Tottenham Court Road Station



**Demolition of Goslett Yard**



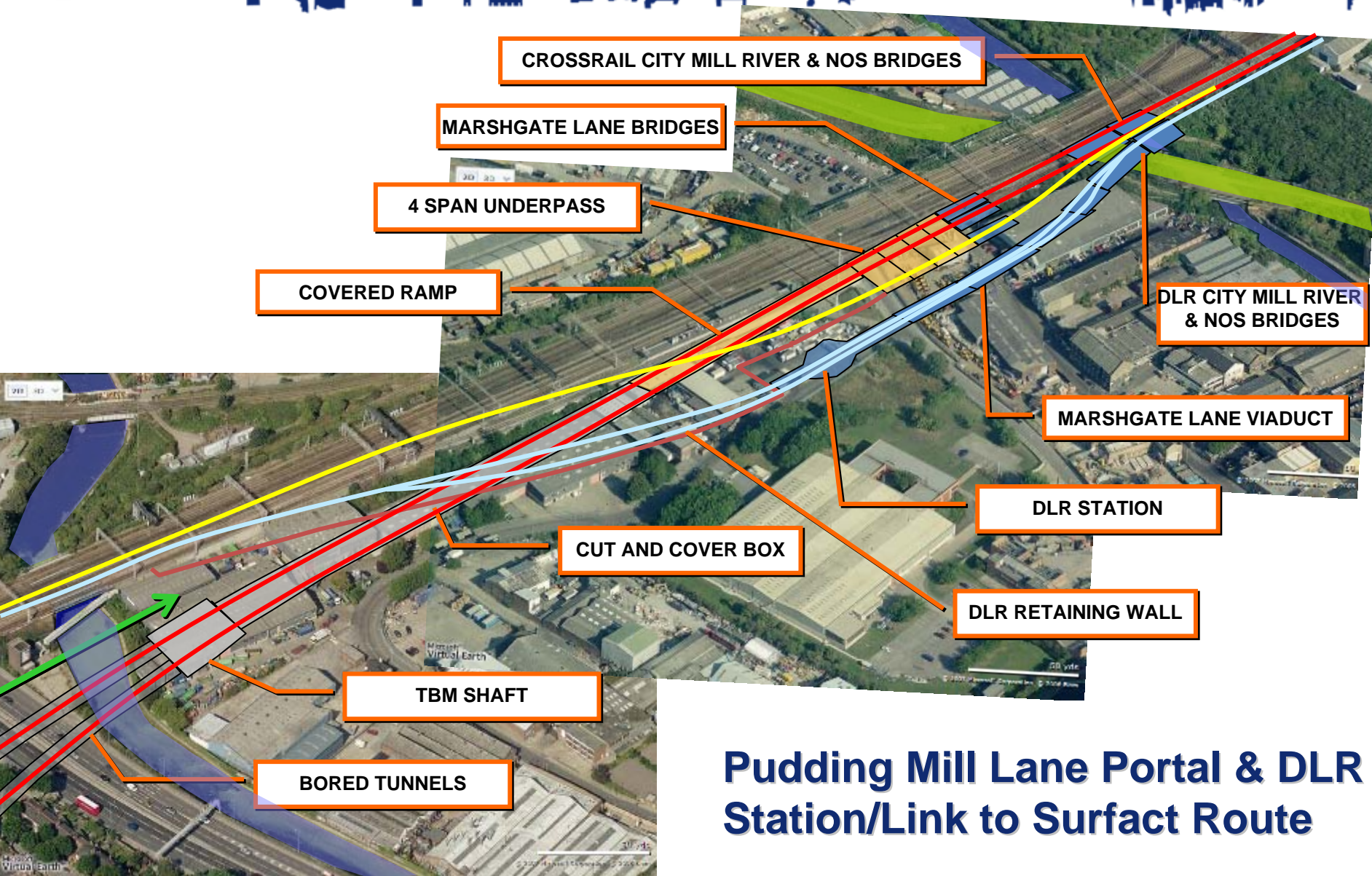
**Demolished Astoria Theatre**

# Farringdon: Cardinal Tower Demolition





# Canary Wharf



## Pudding Mill Lane Portal & DLR Station/Link to Surface Route

# Community Relations



## Construction Code (Annex 1 to the EMR) CR/QMS/P/0302

Custodian

**Simon Phillips**

### REVISION HISTORY

Rev	Date	Prepared	Review	Approved	Description
7.0	31/07/08	SJFP	CLRL	RP	Final Version
5.0	12/05/08	SJFP	CLRL	RP	Consultation Draft
4.0	02/11/07	SJFP	CLRL	RP	Consultation Draft
3.0	17/11/06	SJFP	CLRL	DA	Consultation Draft
2.0	26/05/06	SJFP	CLRL	DA	Consultation Draft
1.0	03/12/05	SJFP	CLRL	DA	Consultation Draft

### NOTE

This document is for consultation purposes only and should not be taken to represent the views of any party until such time as it has been finalised.

Notify the Custodian of all errors, omissions and suggested improvements.

This document is approved and authorised for application within Cross London Rail Links Ltd.

This document contains proprietary information. No part of this document may be reproduced without proper written consent from the Chief Executive of Cross London Rail Links Ltd.

Notify the Custodian of all errors, omissions and suggested improvements.

Cross London Rail Links Limited  
Portland House  
Bressenden Place  
LONDON SW1E 5BH

Tel: 020 3023 9100  
Fax: 020 3023 9101

[www.crossrail.co.uk](http://www.crossrail.co.uk)

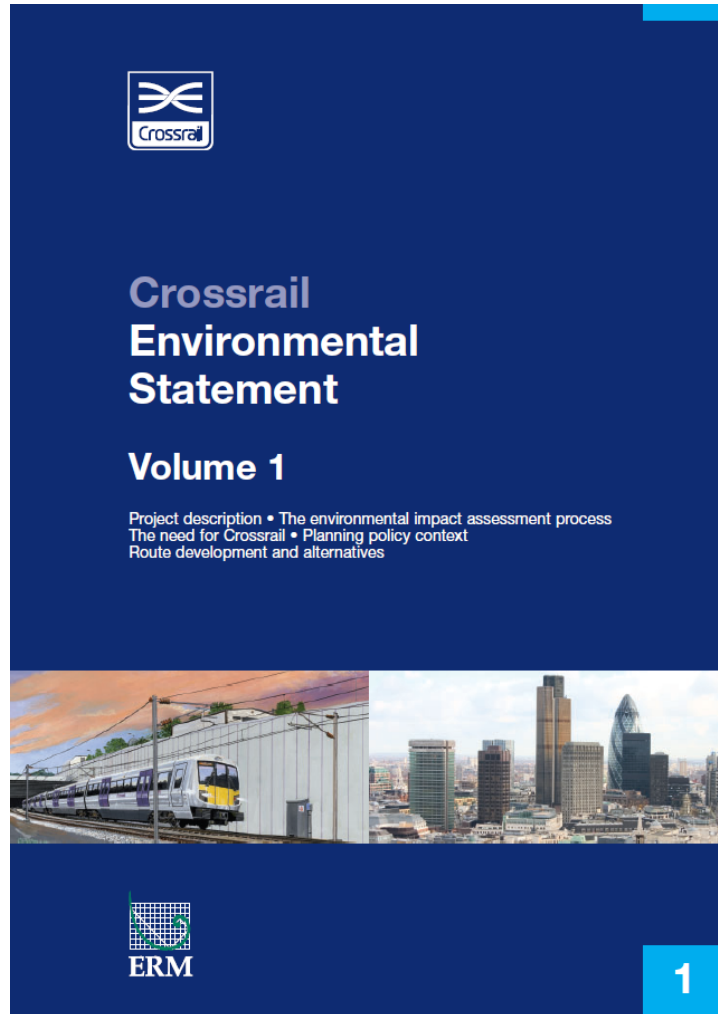


# Young Crossrail

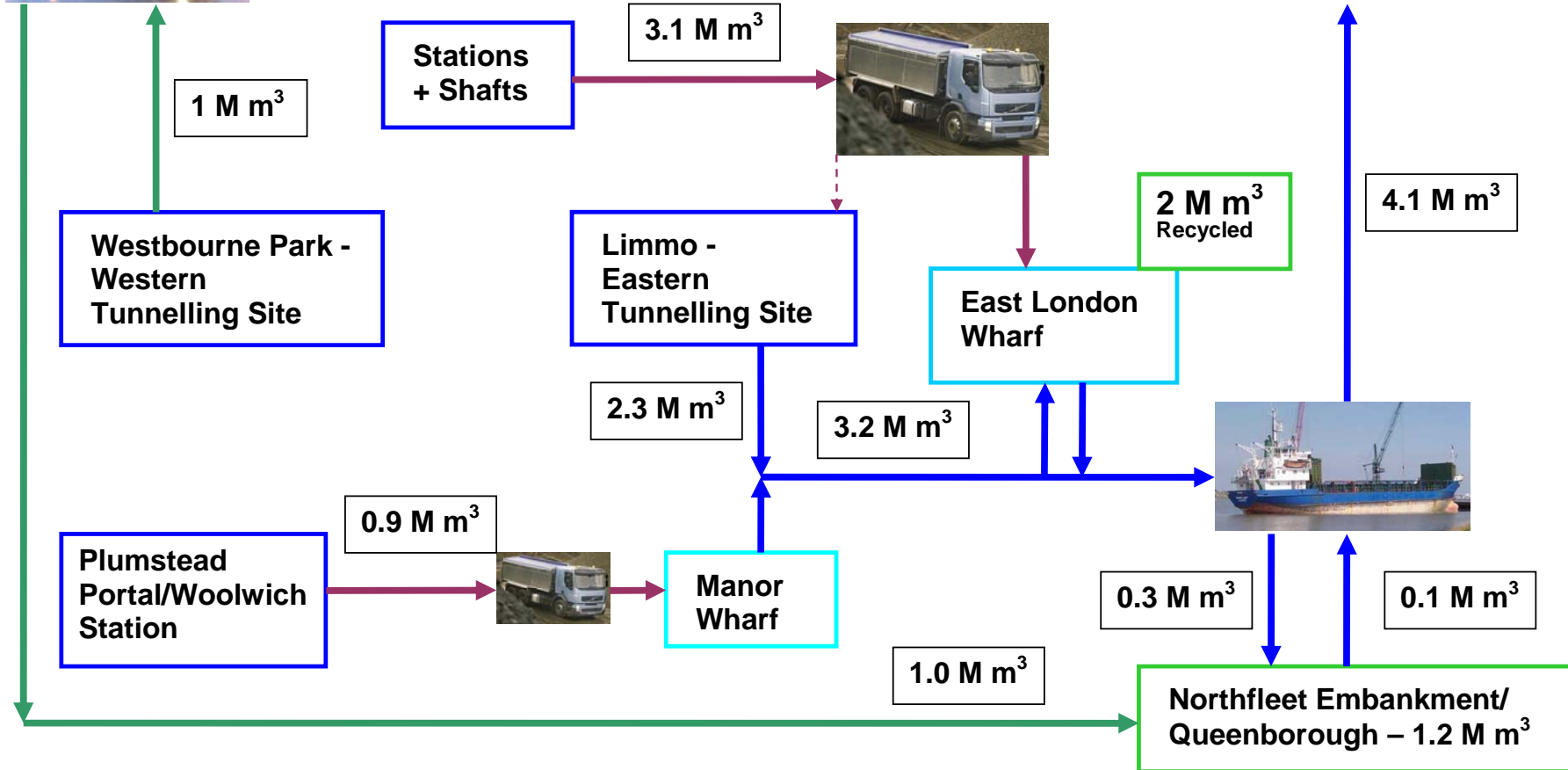


# Sustainability





# Crossrail's Carbon Footprint



# Wallasea Island



A white silhouette of the London skyline against a dark blue background. It includes recognizable landmarks such as the London Eye, Big Ben, the Shard, and other city buildings.

# Summer 2010

- Fourth and latest Treasury review completed
- Baseline functionality, scope and cost approved
- Over 3,500 people engaged
- Over 40 sites in London – every Crossrail station
- Key shafts and portals under construction, Royal Oak cleared and ready
- Surface land acquisition complete, over £650m
- Spend and commitments over £2.5bn, in contract for further £1.5bn

A white silhouette of the London skyline against a dark blue background, featuring landmarks such as Big Ben, the London Eye, and the Shard.

***Delivering a world-class  
affordable railway safely  
through effective partnerships***